



ELIT FR-KW

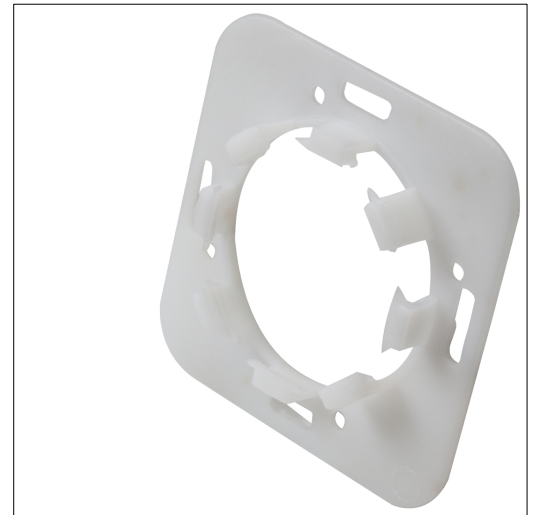
Mounting ring for kitchen wattmeter

Technical description

This mounting ring is designed to fit a standard wall box. With this mounted, a kitchen wattmeter panel can be easily snapped into place. A standard wall frame/combination plate can be used between the panel and the wall or where switches are mounted one above the other. The frame measures 70x70mm and is 1.6mm thick.

Advantages:

Enables direct attachment of kitchen wattmeters in a standard wall box
Pre-fitted and with snap-on attachment for the instrument
Made for all ELIT kitchen wattmeters



Product name/ Art.nr/ GTIN	ELIT FR-KW/ 20850010/ 7070810005635
According to:	---
Cover plate length	70 Millimetre
Application	Device cup
Number of single openings	1
Number of round openings	1
Installation technique	CEE 70x70 mm
Type of fastening	Screwing
Blind plate	No
With label area	Yes
Suitable for label area	No
Material	Polyamide (PA)
Colour	White